

Parkheath

Sold on Service

Greencroft Gardens NW6

£2,200 PCM (£508 per week) - Camden Band TBC

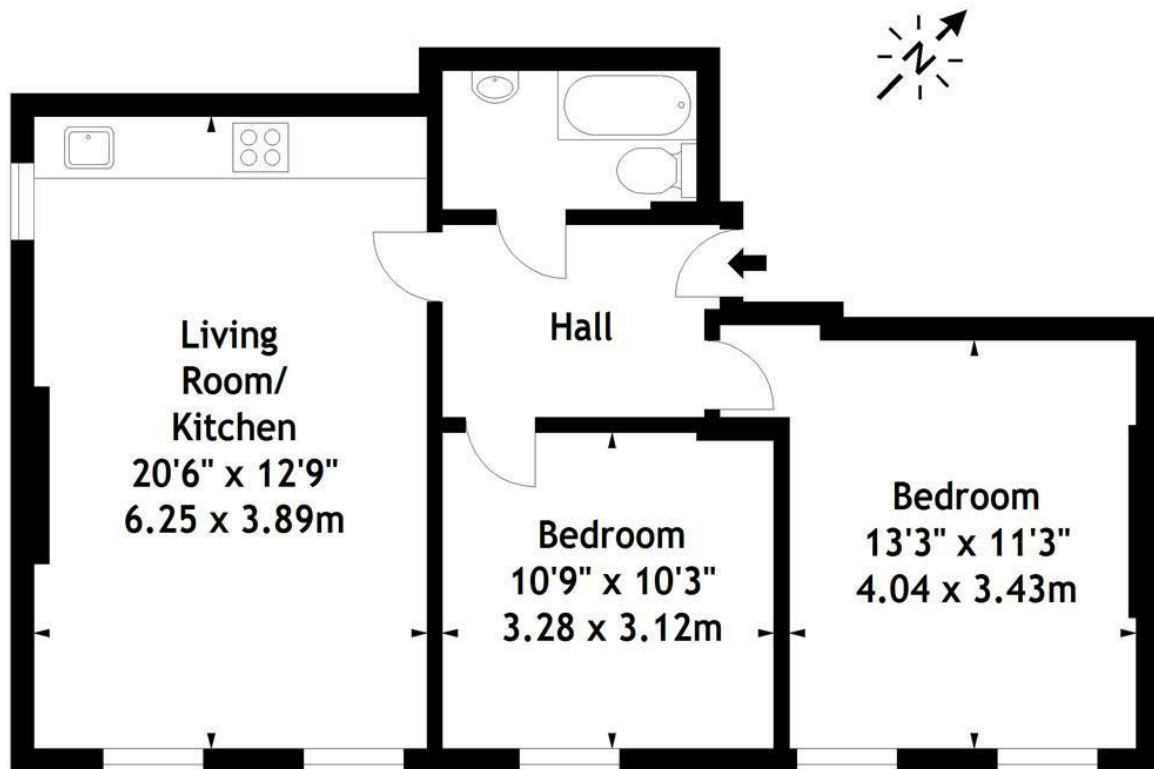


Spacious 2 bedroom apartment
South Hampstead conservation area
Wooden floors throughout
Open plan kitchen

2nd floor of an attractive period conversion
5 minute walk to Finchley Road underground
Reception/dining room

South Hampstead Office 020 7625 4567
West Hampstead Office 020 7794 7111

Greencroft Gardens, NW6
Approx. Gross Internal Area
646 Sq Ft - 60.01 Sq M



Second Floor

Measured in accordance with RICS guidelines. Every attempt is made to ensure accuracy, however all measurements are approximate.

This floor plan is for illustrative purposes only and is not to scale.

© Datography Ltd 2016

Photographs * Floorplans * Virtual Tours
Tel: 0845 643 4401 www.datography.com

The particulars do not constitute part of an offer or contract. The particulars, including text, photographs and plans, are for the guidance only of prospective purchasers/tenants and must not be relied upon as statements of fact. The descriptions provided therein represent the opinion of the author and whilst given in good faith should not be construed as statements of fact. Nothing in these particulars shall be deemed a statement that the property is in good condition or otherwise or that any services or facilities are in good working order. All measurements are approximate